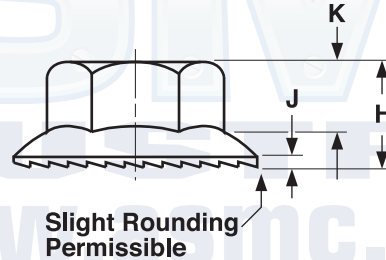
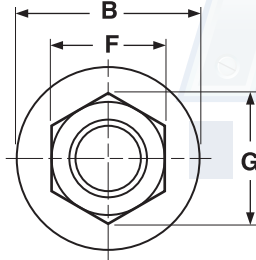


NUTS

SERRATED HEX FLANGE

Case Hardened Steel
18-8 Stainless



SERRATED HEX FLANGE LOCK NUTS

ASME B18.16.4-2008

Nominal Size or Basic Major Diameter of Thread	F		G		B		H		K	J	
	Width Across Flats		Width Across Corners		Flange Diameter		Nut Thickness		Wrenching Height	Flange Thickness	
	Max	Min	Max	Min	Max	Min	Max	Min	Min	Min	
4	0.1120	0.250	0.241	0.289	0.275	0.386	0.370	0.160	0.147	-	0.02
6	0.1380	0.312	0.302	0.361	0.342	0.422	0.406	0.171	0.156	0.10	0.02
8	0.1640	0.344	0.334	0.397	0.381	0.469	0.452	0.203	0.187	0.13	0.02
10	0.1900	0.375	0.365	0.433	0.416	0.500	0.480	0.219	0.203	0.13	0.03
12	0.2160	0.438	0.428	0.505	0.488	0.594	0.574	0.236	0.222	0.14	0.04
1/4	0.2500	0.438	0.428	0.505	0.488	0.594	0.574	0.236	0.222	0.14	0.04
5/16	0.3125	0.500	0.489	0.577	0.557	0.680	0.660	0.283	0.268	0.17	0.04
3/8	0.3750	0.562	0.551	0.650	0.628	0.750	0.728	0.347	0.330	0.23	0.04
7/16	0.4375	0.688	0.675	0.794	0.768	0.937	0.910	0.395	0.375	0.26	0.04
1/2	0.5000	0.750	0.736	0.866	0.840	1.031	1.000	0.458	0.437	0.31	0.05
9/16	0.5625	0.875	0.861	1.010	0.982	1.188	1.155	0.506	0.483	0.35	0.05
5/8	0.6250	0.938	0.922	1.083	1.051	1.281	1.248	0.569	0.545	0.40	0.05
3/4	0.7500	1.125	1.088	1.299	1.240	1.500	1.460	0.675	0.627	0.46	0.06
7/8	0.8750	1.179	1.166	1.361	1.295	1.682	-	0.786	0.742	-	0.11

*ASME specification applies to #6 through 3/4" diameters.

Description	Hex nut with an enlarged circular base flaring out from the bottom of the nut. The bearing surface of the flange has serrations which displace material on the mating surface when the nut is wrenched into place, forming a connection which resists loosening.	
Applications/ Advantages	Requires a greater amount of torque to loosen than to tighten the nut. Will span oversized or poorly aligned holes. Flange provides a more uniform bearing-stress to clamp-force ratio than other low carbon lock nuts. Does not gall screw threads.	
Material	<i>Steel</i>	<i>Stainless</i>
	Nuts shall be made from a carbon steel which conforms to the following chemical composition requirements-- Carbon: 0.47% max.; Phosphorus: 0.12% max.; Sulfur: 0.23% max.	18-8 stainless steel
Heat Treatment	Nuts are case hardened to the proper hardness to ensure the serrations will have sufficient gripping strength.	
Case Hardness	Rockwell HR15N 78 - 90	
Plating	Steel flange nuts are supplied in various finishes, including clear zinc, black zinc and black oxide.	Stainless flange nuts are usually provided without any additional plating.