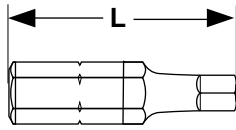


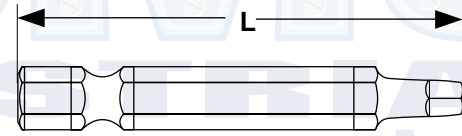
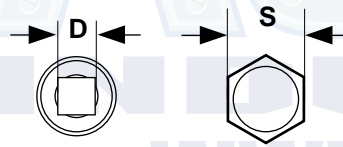
**Extra
Hard**

Square Drive

Insert Bits



INSERT BIT



POWER BIT

| SQUARE RECESS INSERT BITS • EXTRA HARD | | | | | Magna™, Apex®* | |
|--|-------|--------|--------------|------------|-------------------|----------------|
| Part Numbers | | | S | Point Size | D | L |
| Kanebridge | Apex® | Magna™ | Shank (A.F.) | | Point Diam. (Ref) | Overall Length |
| 38-509 | 950-0 | 38509 | 1/4 | 0 | .062 | 1 |
| 29-049 | 950-1 | 29049 | 1/4 | 1 | .094 | 1 |
| 29-050 | 950-2 | 29050 | 1/4 | 2 | .125 | 1 |
| 29-051 | 950-3 | 29051 | 1/4 | 3 | .141 | 1 |

| SQUARE RECESS POWER BITS • EXTRA HARD | | | | | Magna™, Apex®* | |
|---------------------------------------|---------|--------|--------------|------------|-------------------|----------------|
| Part Numbers | | | S | Point Size | D | L |
| Kanebridge | Apex® | Magna™ | Shank (A.F.) | | Point Diam. (Ref) | Overall Length |
| 29-052 | 954-1 | 29052 | 1/4 | 1 | .094 | 1-15/16 |
| 29-053 | 954-2 | 29053 | 1/4 | 2 | .125 | 1-15/16 |
| 29-054 | 954-3 | 29054 | 1/4 | 3 | .141 | 1-15/16 |
| 29-058 | 954-A-1 | 29058 | 1/4 | 1 | .094 | 2-3/4** |

*Bits meet the same dimensions as those published by the manufacturers of the Apex® and Magna™ brands.

**3 inch length is also acceptable.

| | |
|-------------------------------------|--|
| Applications/ Advantages | Square recess bits are popular in the furniture, mobile home and recreational vehicle industries. They are used in many overhead installations. They increase productivity with excellent torque transmission and resist cam-out. Power bits are intended for use in power drivers. Insert bits are to be used in hand drivers, or in power drivers when used with a properly fitting bit holder. Extra hard bits are used specifically with case hardened screws. |
| Material | Chrome vanadium tool steel |
| Hardness | Rockwell C 59 - 62. |

®Apex is a registered trademark of Cooper Industries.

™Magna is a division of Vermont American Corporation.

Kanebridge's insert and power bits are not manufactured by or connected with the producers of Apex® or Magna™ bits.